

APPENDIX A

POWER/GPIO CONNECTOR

PINOUTS

This connector has four pin slots: power, ground, input, and output.

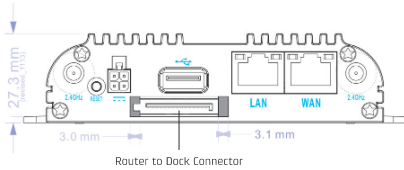
Connector pinout – view into router (rear view of cable connector):



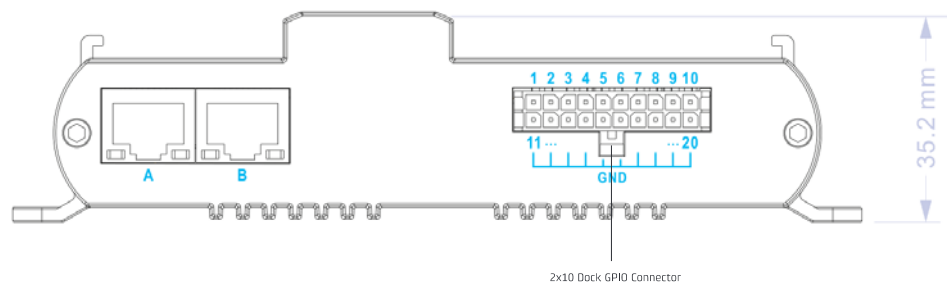
Pin	Definition	Details	Wire Color
1	Ground	-	Black
2	Power	9-33V DC	Red
3	Input	3.4V input high threshold (33V tolerant)	Orange
4	Output	capable of sinking 250 mA	Blue

EXTENSIBILITY DOCK

PINOUTS

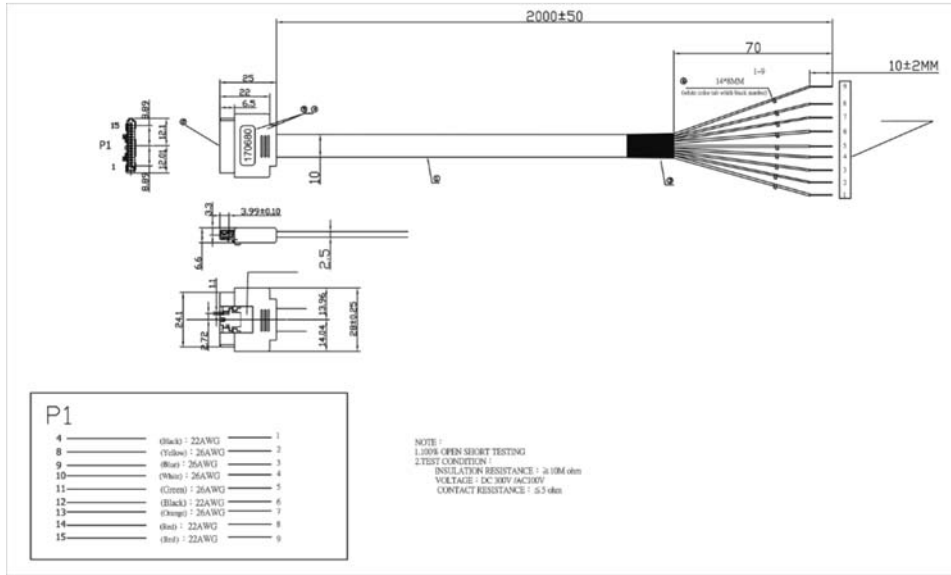


Router to Dock Connector	
Pin 1	Ethernet TX-
Pin 2	Ethernet TX+
Pin 3	Ethernet RX-
Pin 4	GND
Pin 5	Ethernet RX+
Pin 6	USB D-
Pin 7	USB D+
Pin 8	GPIO1
Pin 9	GPIO2
Pin 10	GPIO3
Pin 11	GPIO4
Pin 12	GND
Pin 13	Ignition Sense
Pin 14	Router power in/out (18W in min; 6W out max)
Pin 15	Router power in/out (18W in min; 6W out max)



2x10 Dock GPIO Connector	
Pin 1	Router+Dock power - input only (24W min)
Pin 2	Router+Dock power - input only (24W min)
Pin 3	Reserved
Pin 4	Reserved
Pin 5	GPI (ignition sense)
Pin 6	GPI01
Pin 7	GPI02
Pin 8	GPI03
Pin 9	GPI04
Pin 10	Low current 5V output (50mA max)
Pin 11-20	Ground

GPIO CABLE



Wire	Signal
Black (2)	GND
Yellow	GPIO1
Blue	GPIO2
White	GPIO3
Green	GPIO4
Orange	Ignition sense
Red (2)	Router power

- Ignition Sense threshold: max 3.4V, protected to 33V
- GPIOs: LTLT compatible, protected to 33V