

# Cradlepoint Secure VPN (Powered by Asavie) Overview

## Content

### **Cradlepoint Secure VPN (Powered by Asavie) Overview**

*Products Supported: AER31x0, AER2100, MBR1400v2, IBR11x0, and IBR6x0. Click [here](#) to identify your router.*

*Firmware Version: 6.0.0 - for information on upgrading firmware, click [here](#).*

---

### **Quick Links**

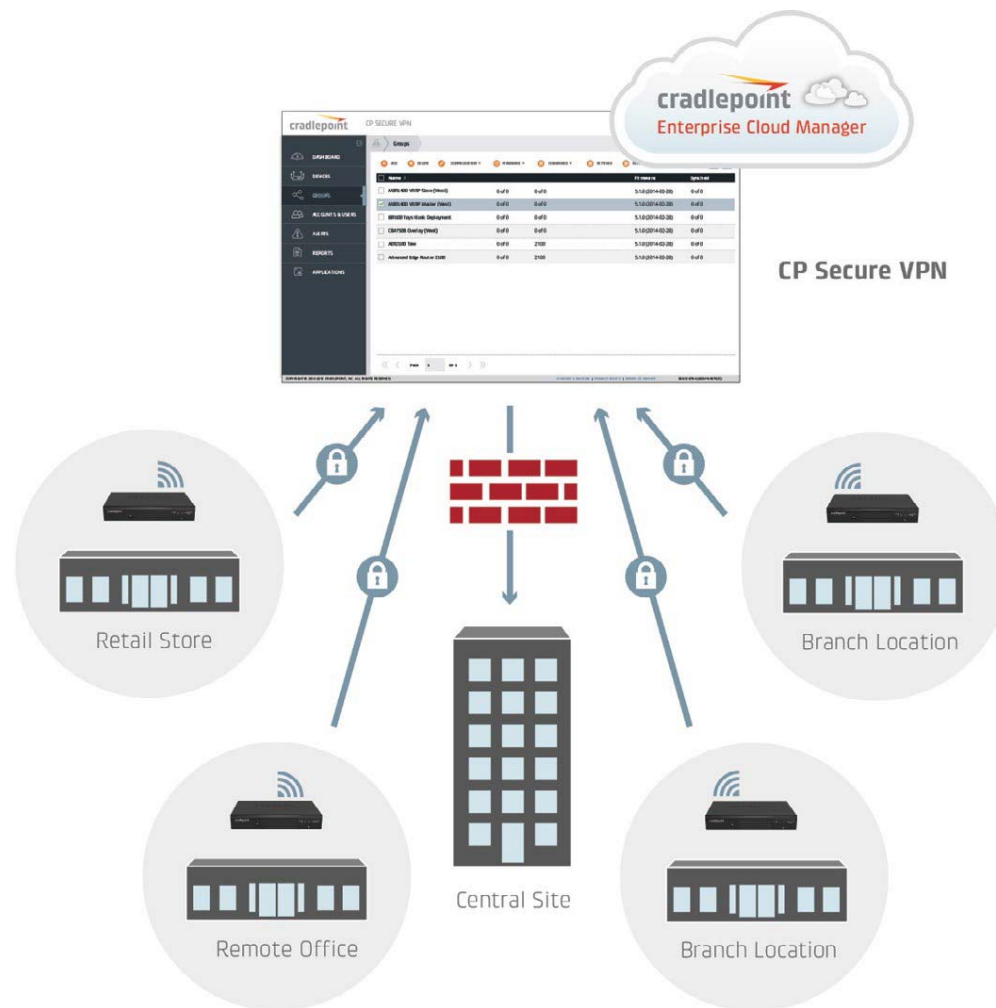
**[Overview](#)**

**[Subnet WAN vs NAT WAN](#)**

**[Related Articles](#)**

---

### **Overview**



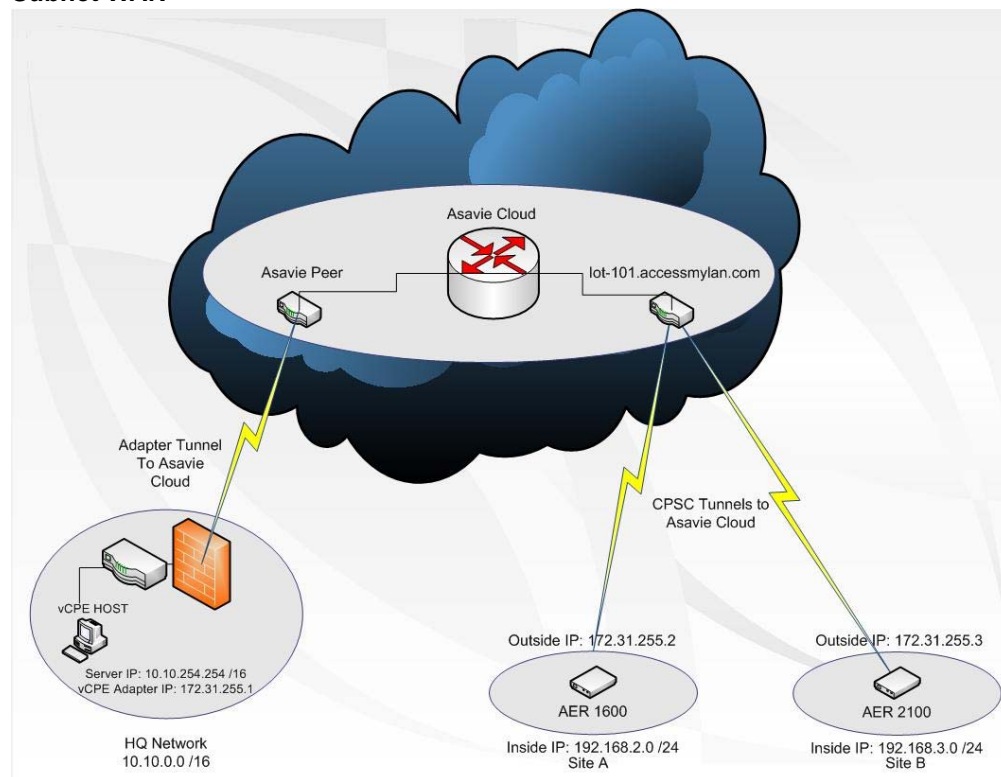
**CP Secure VPN requires ECM Prime. Click [here](#) to learn more about ECM PRIME.**

Configured, deployed, and managed from the cloud, Cradlepoint Secure VPN delivers a virtual private data network that minimizes both cost and complexity. Unlike traditional bulky head-end concentrator hardware solutions, Cradlepoint Secure VPN allows you to:

- Prevent untrusted access with mutual X.509 authentication on TLS
- Assign the same IP address to multiple end points for seamless failover in business continuity applications
- Pay for what you need (new end-points can be set up in minutes with no back office IT effort)
- Secure back office connectivity with easy-to-use web-based admin tools
- Rapidly deploy and scale to meet demand—without hardware costs or lead times

## Subnet WAN vs NAT WAN

### Subnet WAN

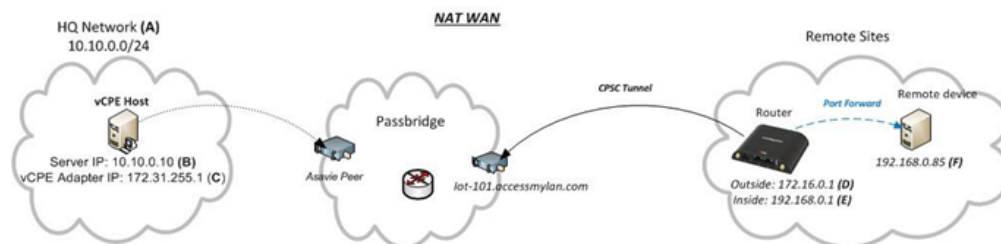


Cradlepoint Secure VPN Subnet WAN is meant to allow communication to and from each remote Cradlepoint subnet. Given this type of setup, you **MUST** have a **UNIQUE** subnet behind each Cradlepoint.

This method uses A GRE Tunnel along with RIP in order for all sites to learn where each remote subnet resides with minimal configuration.

**NOTE** Requires ECM Prime for advanced routing functionality.

### NAT WAN



Cradlepoint Secure VPN NAT WAN is meant to allow communication to and from one client device per site, however multiple clients can be accessed with some configuration.

This method uses Port Forwarding in order to access the remote devices. As stated, its purpose was for one device at each site, however multiple devices may be accessed with multiple port forwarding rules. Due to this type of setup, each remote subnet can be the SAME.

---

### Related Articles/Links

- [Cradlepoint Secure VPN \(Powered by Asavie\)](#)
  - [Cradlepoint Secure VPN-Subnet WAN Installation Guide](#)
  - [Cradlepoint Secure VPN-NAT Installation Guide](#)
  - [Cradlepoint Secure VPN Troubleshooting](#)
  - [Cradlepoint Secure VPN-NAT WAN Installation Guide - FW 5.4.x or earlier](#)
  - [Cradlepoint Secure VPN-Subnet WAN Installation Guide - FW 5.4.x or earlier](#)
  - [CradlePoint KnowledgeBase](#)
- 

Published Date: 10/05/15

This article not have what you need? Not find what you were looking for? Think this article can be improved? Please let us know at [suggestions@cradlepoint.com](mailto:suggestions@cradlepoint.com).

**Open as PDF**