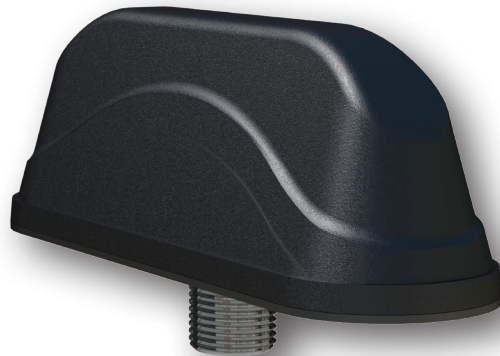


4 in 1 MiMo M2M & IoT

Low Profile MiMo Antenna

The 4 in 1 panel mount antenna has been designed for use with the Cradlepoint IBR900 router and provides multiple functions in one antenna for IoT and M2M applications. The compact, robust low-profile housing is weatherproof and contains 2x2 MiMo antenna function for 2G/3G/4G LTE with 2x2 MiMo antenna function for Wi-Fi.

The antenna can be fitted on a non-conductive panel if required and offers easy, quick, secure and weatherproof installation with the single hole mounting bush and industrial grade adhesive sealing pad. The antenna kit is supplied with integrated 3.3ft (1m) RG174 cables and SMA plug connectors.



Applications:



Kiosk



Digital Signage



Security Camera



Industrial

Electrical Data

Frequency Range	Element 1 & 2 Element 3 & 4	698-960 / 1710-2170 / 2500-3800 MHz 2.5 / 4.9-6.0 GHz	
Operational Band	Element 1 & 2 Element 3 & 4	2G/3G/4G LTE Wi-Fi	
Peak Gain: Isotropic †	Element 1 & 2	698-960 MHz	2dBi
		1710-3800 MHz	5dBi
	Element 3 & 4	2.4 GHz	4dBi
		5.8 GHz	6dBi
Pattern	Omni-directional		
Nominal Impedance	50Ω		
Max Input Power	25W		

† Peak gain simulated off a groundplane and does not include cable attenuation

Mechanical Data

Dimensions	Height	1.89" (48mm)
	Length	5.90" (150mm)
	Width	1.75" (45mm)
Operating Temperature	-22° / 158°F (-30° / +70°C)	
Material	ASA	
Color	Black	
Ingress Protection	IP65	
Weight	200g	

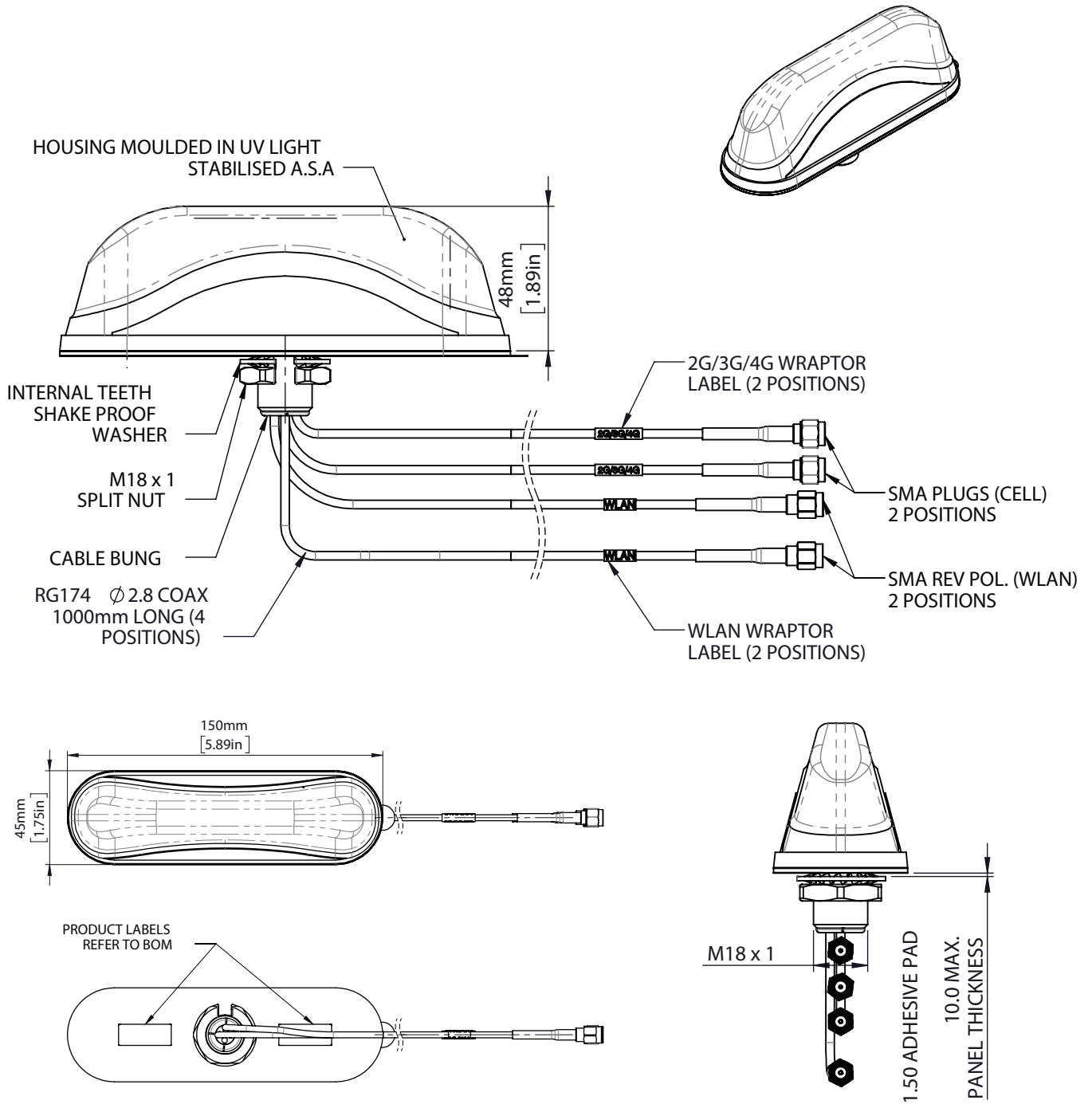
Cable Data

	CELL	Wi-Fi
Type	RG174	RG174
Length	3.3ft (1m)	3.3ft (1m)
Termination	SMA Plug	SMA Reverse Polarity Plug

Mounting Data

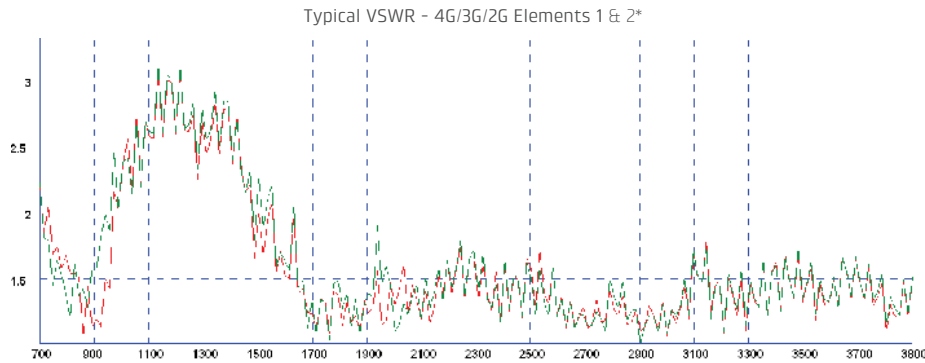
Mounting Type	Panel Mount
Max Panel Thickness	0.27" (10mm)
Mounting Hole	3/4" (19mm)

TECHNICAL DRAWING

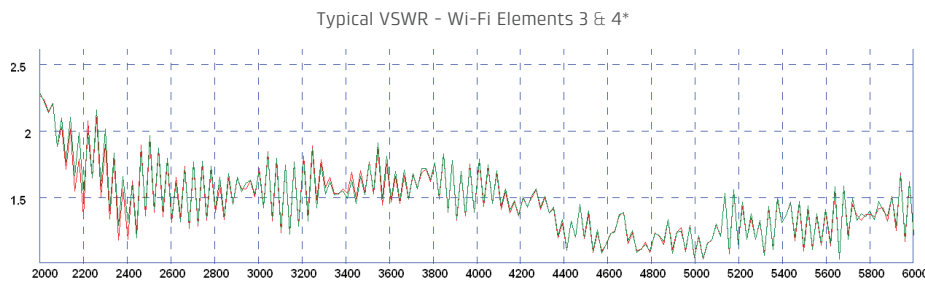


ELECTRICAL DATA

TYPICAL VSWR

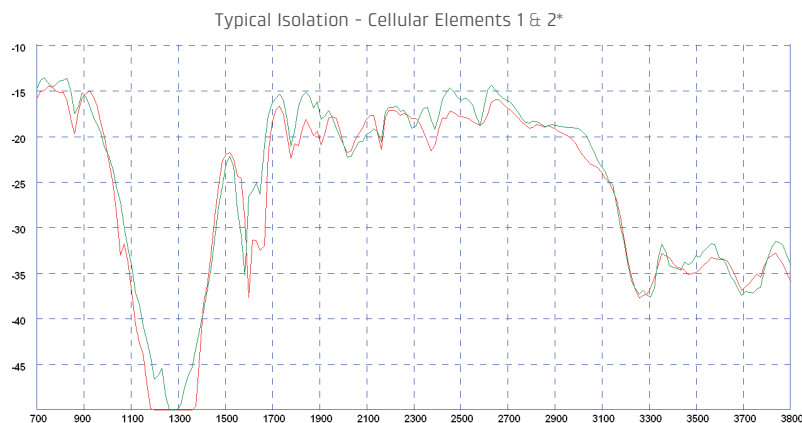


*VSWR measured with 3m (10') of RG174 cable a) Red: in free space b) Green: on a 400x 400mm (1'4') ground plane

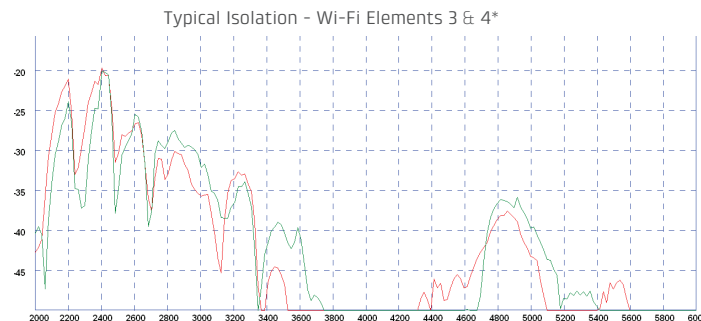


*VSWR measured with 3m (10') of RG174 cable a) Red: in free space b) Green: on a 400x 400mm (1'4') ground plane

ISOLATION



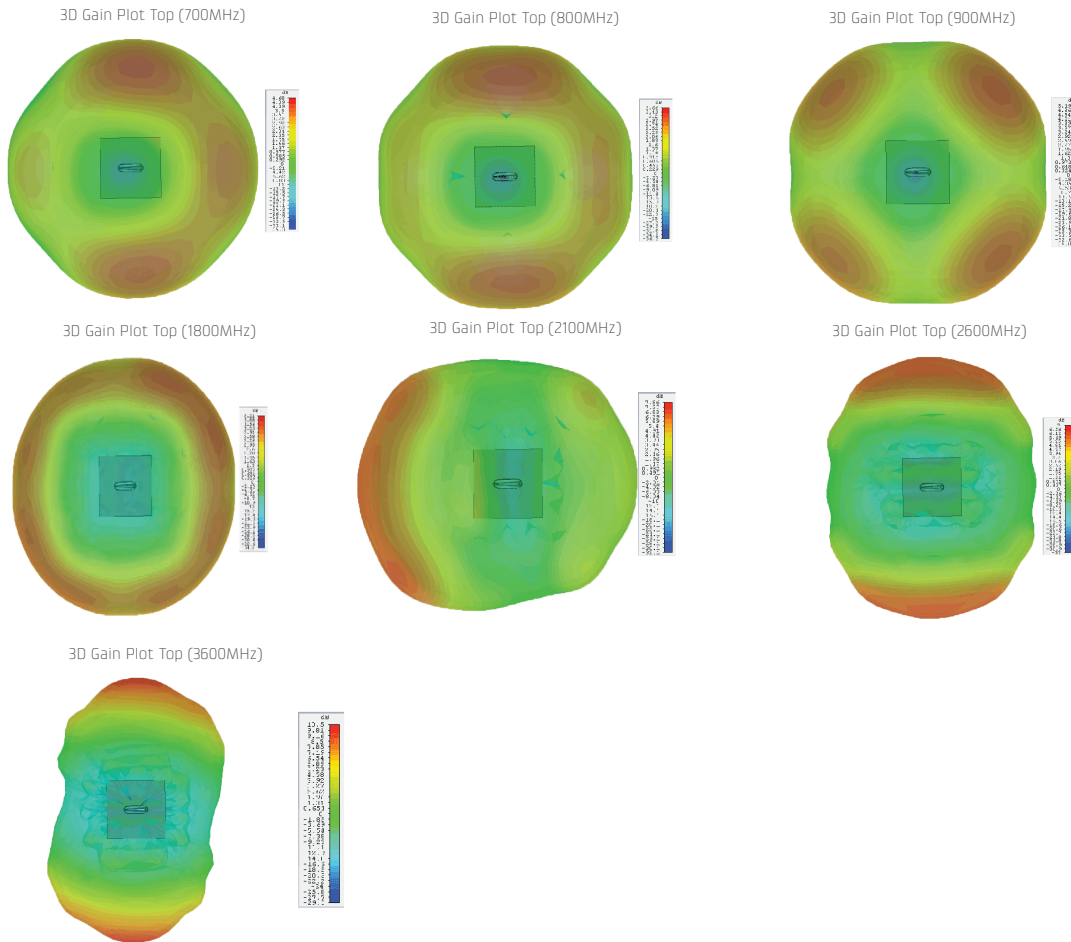
*Isolation measured with 3m (10') of RG174 cable a) Red: in free space b) Green: on a 400x 400mm (1'4') ground plane



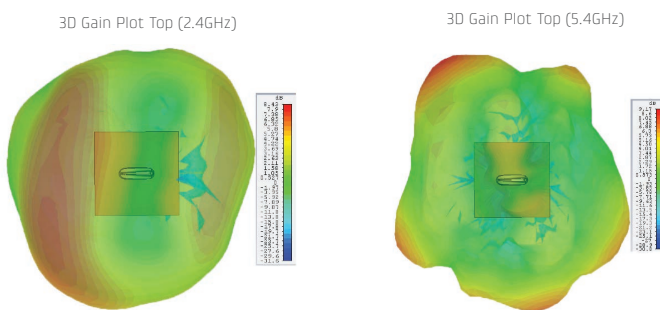
*Isolation measured with 3m (10') of RG174 cable a) Red: in free space b) Green: on a 400x 400mm (1'4') ground plane

RADIATION PATTERNS

3D RADIATION PATTERNS - 2G/3G/4G LTE ELEMENTS 1 & 2*



3D RADIATION PATTERNS - WI-FI ELEMENTS 4 & 5*



*All pattern and gain measurements taken on a 400 x 400mm (2' x 2') ground plane without additional cable.

FOR MORE INFORMATION, VISIT CRADLEPOINT.COM